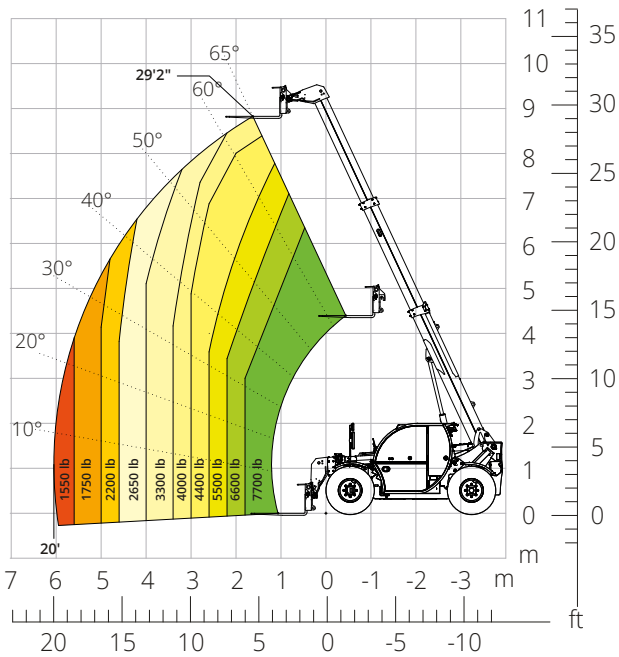


THA



7.29

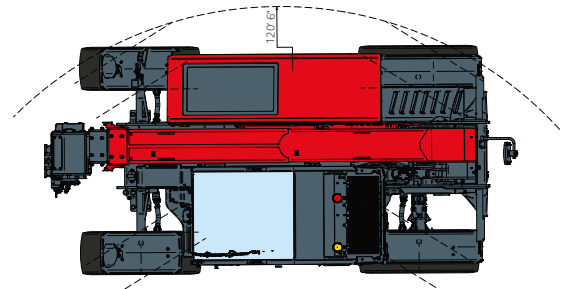
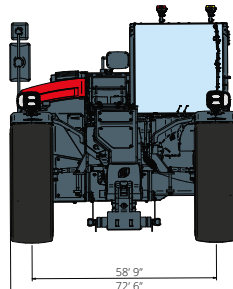
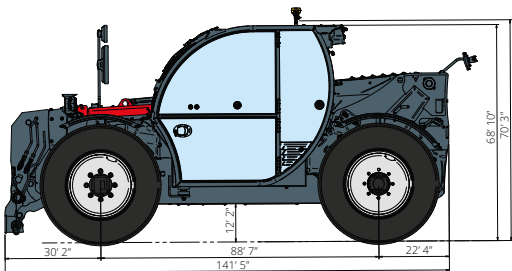
PRELIMINARY



Load chart on tyres



AGRICULTURE



Machine model	Telescopic handler	THA 7.29	
	Maximum lifting capacity	7,700 lb	
	Maximum lifting height	29' 2"	
	Maximum reach	20'	
Engine	Model	Deutz TCD 3,6 L4 EDG - Stage IIIA	Deutz TCD 3,6 L4 Stage V
	Rated power	85 kW (115 hp) at 2,600 rpm	
	Maximum torque	460 Nm at 1,600 rpm	
	Displacement	219.7 in ³	
	Cylinders	4 in line	
	Engine configuration	Turbocharged direct injection diesel	
	Cooling system	Water	
	Transmission	Type	Hydrostatic
Maximum pressure		500 bar	
Gear box		Dropbox, 2 speeds forward-reverse	
Axles and brakes	Type	Axles with planetary gearboxes	
	Front axle	Steering	
	Rear axle	Free oscillation	
	Sideshift	-	
	No. of driving/steering wheels	4WD - 4WS	
	Steering mode	Frontal/Concentric/Crab	
	Service brake	Wet multi-disk on front and rear axle	
	Parking brake	Hydraulic with negative action on front axle	
Performance	Tyres dimensions	405/70 R24	
	Max. travel speed	20 mph	
	Turning radius (over tyres)	11' 1"	
Weights	Tractive effort	7,100 daN	
	Total unladen*	16,980 lb	
Tank and system capacities	Diesel fuel	20 U.S. gal	
	AdBlue	2.64 U.S. gal	
	Hydraulic fluid	25 U.S. gal	
	Engine oil	2.4 U.S. gal	
	Coolant	4 U.S. gal	
Hydraulic circuit for movements	Circuit type	Load sensing	
	Service pump	Variable displacement	
	Max. hydraulic flow rate	23.7 U.S. gpm	
	Max. boom head flow rate	19.8 U.S. gpm	
	Max. operating system pressure	315 bar	
	Controls for boom movements	Compensated electro-proportional valve	
Road type approval	Movements control	1 joystick with integrated manoeuvre enable	
	167/2013: Mother Regulation	T1a	
Standard met	2006/42/EC: EU Machinery Directive		
	2000/14/EC: Noise Directive		
	EN 1459-1: Relating to standards on the safety requirements for variable reach machines		
	EN 280-1: standards relating to mobile elevating work platforms (if available)		
	2014/30/EU: EMC Directive		
ROPS/level 2 FOPS: relating to the standards for protective structures			

The data given in this brochure are provided for information purposes and are subject to change without prior notice.

All images are purely guideline and might not give an exact representation of the product.

*the stated weight refers to the vehicle unladen with standard equipment and may vary depending on the chosen configuration.