

TH

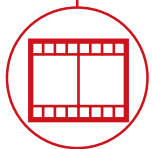
12.62 P



CONSTRUCTION



LOGISTICS



EVENTS AND
FILM



TH 12.62 P



CAB

Best-in-class
safety and visibility



PERFORMANCE

Unrivaled lifting
performance

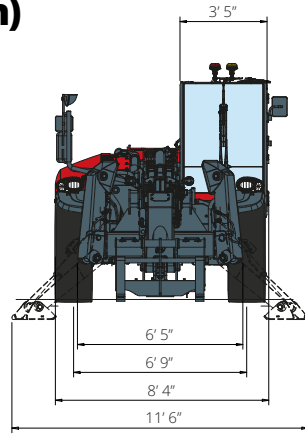


LOAD LIVE DIAGRAM

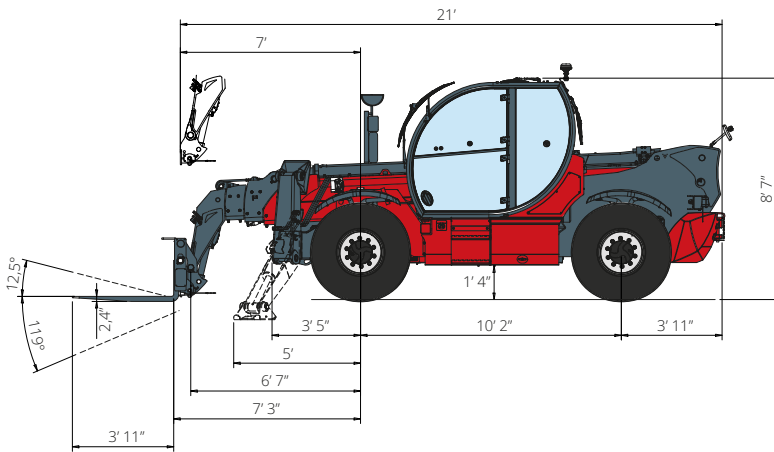
Two real-time dynamic
load charts

TH 12.62 P

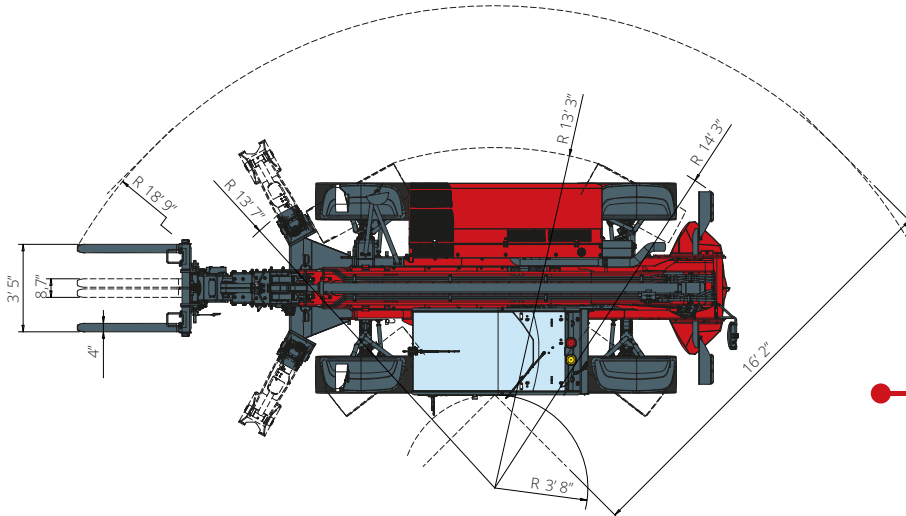
DIMENSIONS (ft and in)



FRONT
view



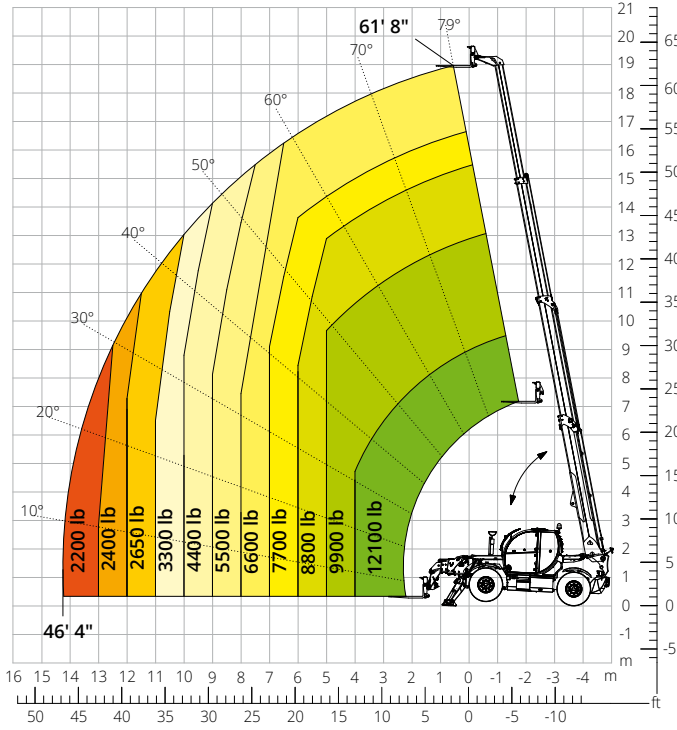
SIDE
view



TOP
view

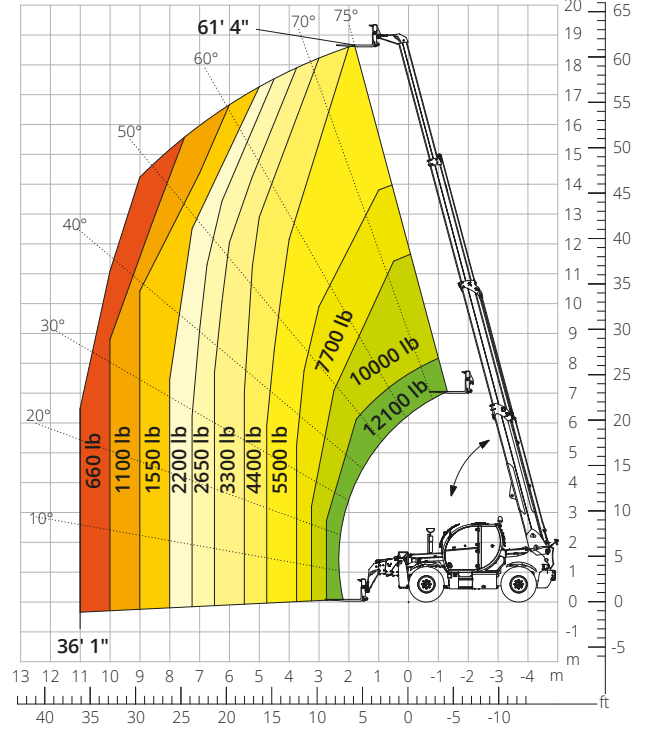
Load chart with
FULLY EXTENDED STABILIZERS

ATT-03-040



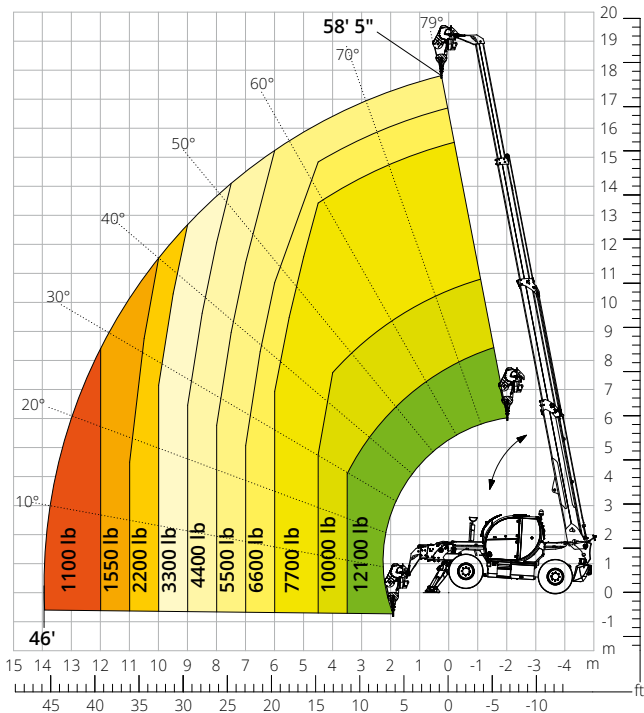
Load chart
FRONT ATTACHMENT ON TIRES

ATT-03-040



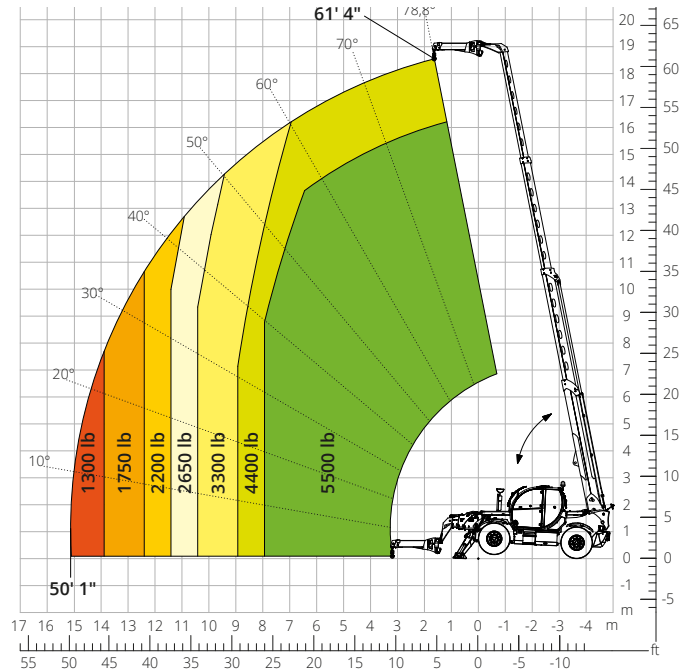
Load chart with
WINCH, 13,200 lb

ATT-02-004

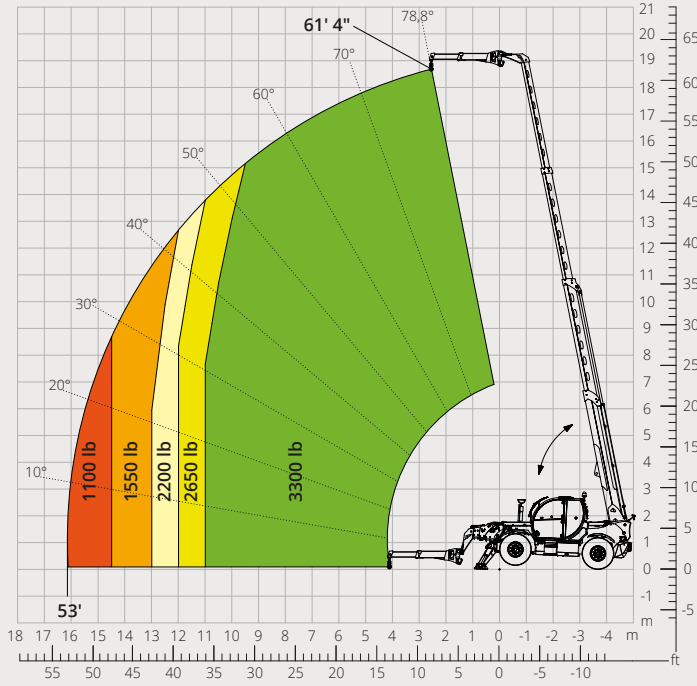


Load chart with
JIB WITH WINCH, 5,500 - 3,300 lb - CLOSED

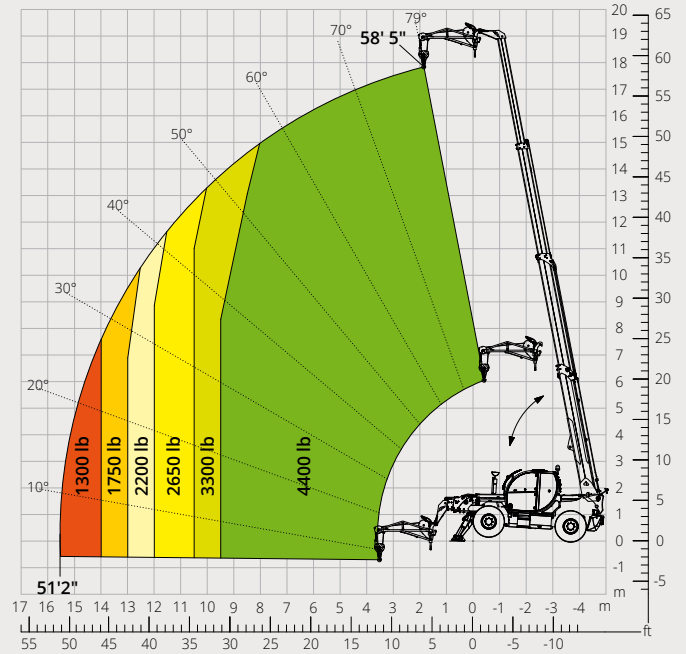
ATT-04-011



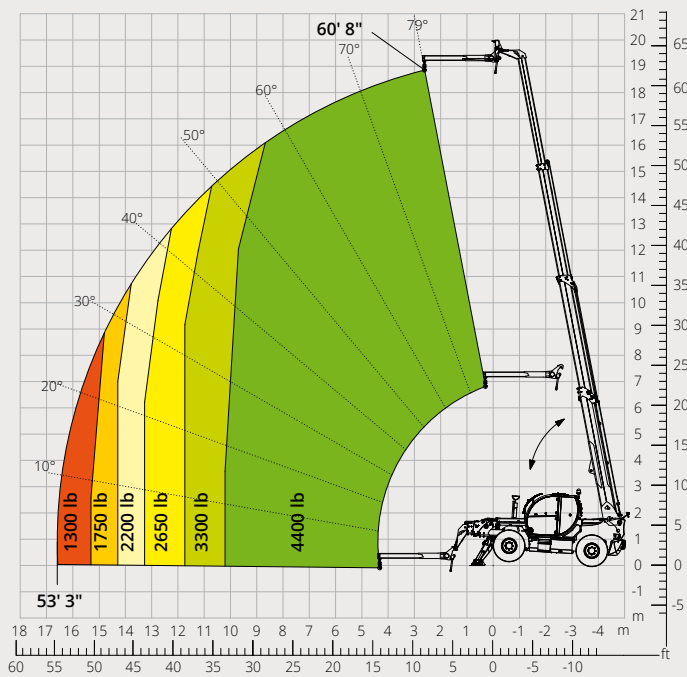
Load chart with
JIB WITH WINCH, 5,500 - 3,300 lb - OPENED
 ATT-04-007



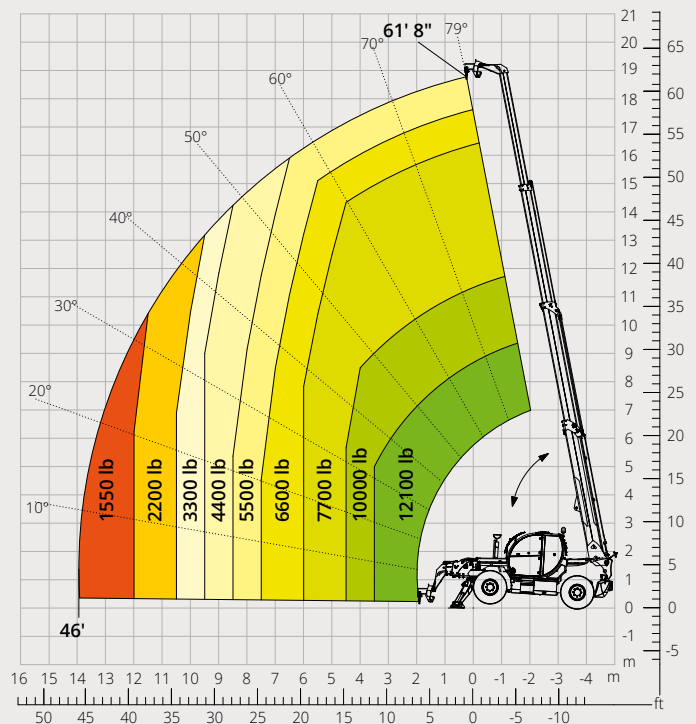
Load chart with
JIB WITH WINCH, 4,400 lb
 ATT-04-015



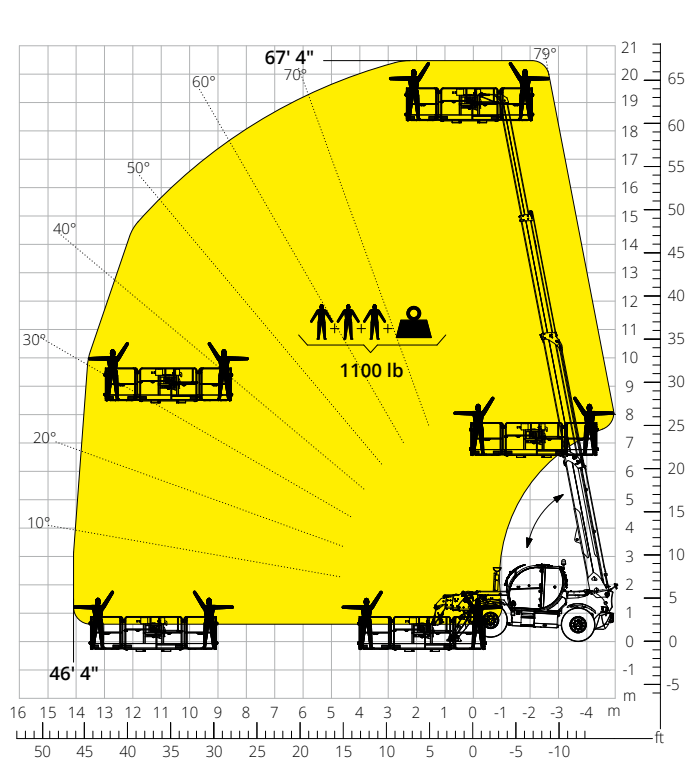
Load chart with
JIB, 4,400 lb
 ATT-04-013



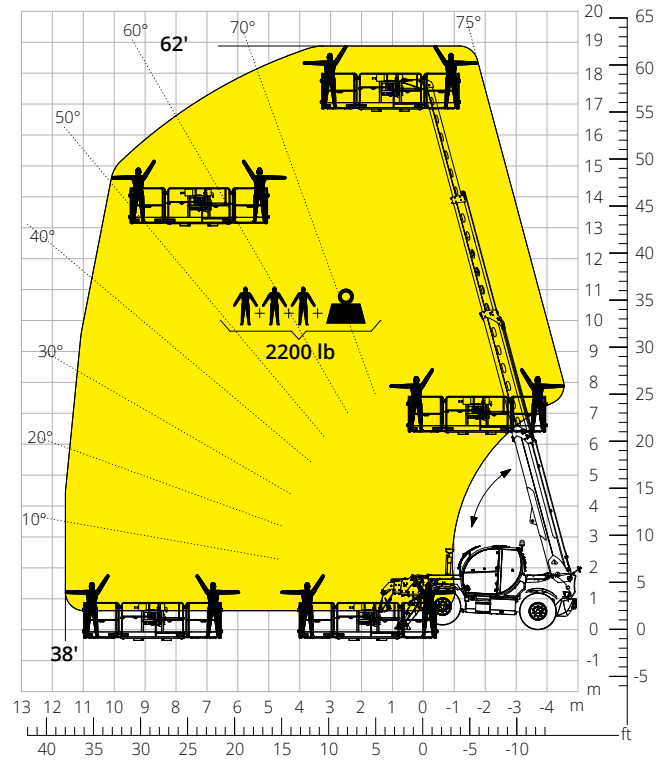
Load chart with
HOOK, 13,200 lb
 ATT-05-001



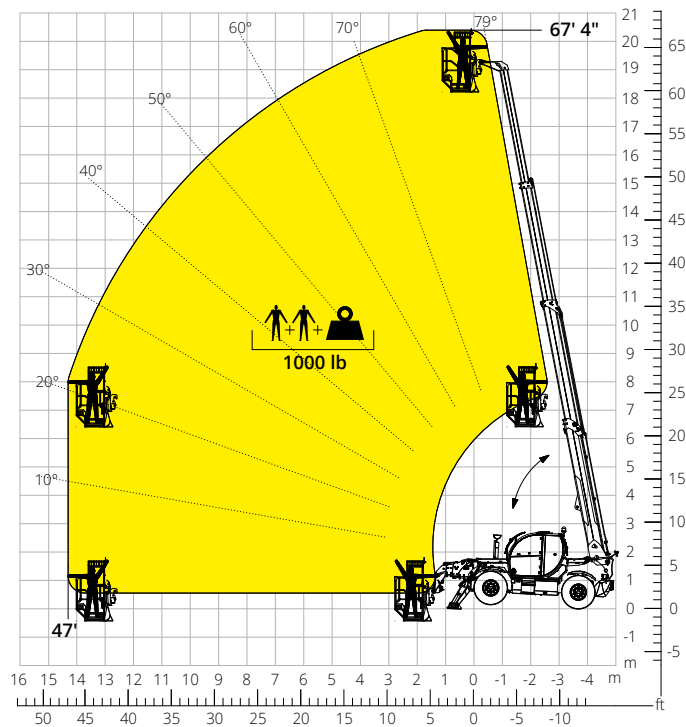
Load chart with
ROTATING EXTENDABLE PLATFORM, 1,100 lb
 ATT-01-007



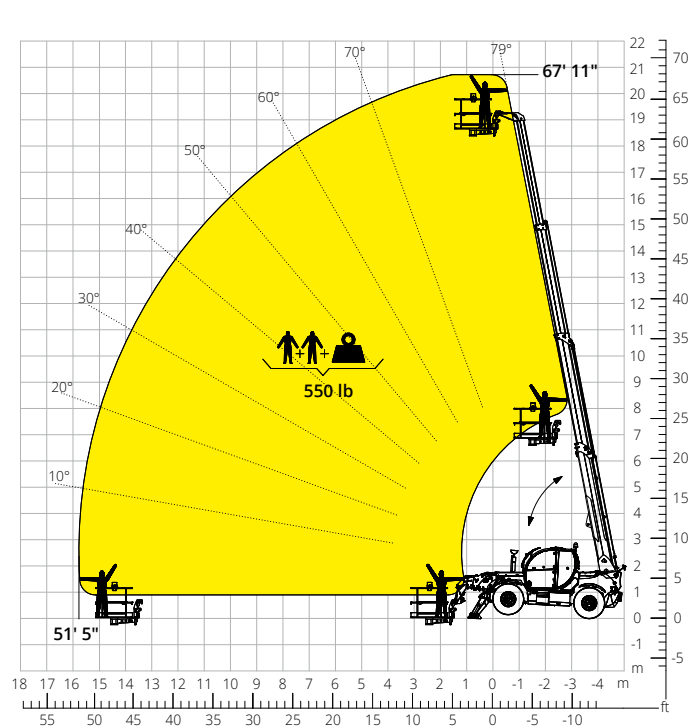
Load chart with
ROTATING EXTENDABLE PLATFORM, 2,200 lb
 ATT-01-016



Load chart with
PLATFORM, 1,100 lb, FOR MINES
 ATT-01-027



Load chart with
FIXED EXTENDABLE PLATFORM, 550 lb
 ATT-01-003



| | | | |
|--|---|---|---------------------------------|
| Machine model | Telescopic handler | TH 12.62 P | |
| | Maximum lifting capacity | 12,100 lb | |
| | Maximum lifting height | 61' 8" | |
| | Maximum reach | 46' 4" | |
| Stabilizers | Type | Pivoting | |
| Engine | Model | Deutz TCD 3,6 L4 EDG - Stage IIIA | Deutz TCD 3,6 L4 Stage V |
| | Rated power | 74.4 kW (101.2 hp) at 2,200 rpm | |
| | Maximum torque | 302 lb/ft at 1,600 rpm | |
| | Displacement | 219.7 in ³ | |
| | Cylinders | 4 in line | |
| | Engine configuration | Turbocharged direct injection diesel | |
| | Cooling system | Water – intercooler | |
| Transmission | Type | Hydrostatic | |
| | Maximum pressure | 480 bar | |
| | Gear box | Dropbox, 2 speeds forward-reverse | |
| Axles and brakes | Type | Axles with planetary gearboxes | |
| | Front axle | Oscillating and steering with levelling, +/-8° | |
| | Rear axle | Oscillating and steering with hydraulic lock | |
| | No. of driving/steering wheels | 4WD - 4WS | |
| | Steering mode | Frontal/Concentric/Crab | |
| | Service brake | Wet multi-disk on front and rear axle | |
| | Parking brake | Hydraulic with negative action on front axle | |
| Performance | Tyres dimensions | 445/65 R22.5 | |
| | Max. travel speed | 21 mph | |
| | Gradeability (unladen) | 55% | |
| | Turning radius (end of forks) | 18'9" | |
| Weights | Total unladen* | 27,950 lb | |
| Tank and system capacities | Fuel tank | 52.8 U.S. gal | |
| | AdBlue | 2.64 U.S. gal | |
| | Hydraulic oil tank | 24.6 U.S. gal | |
| | Engine oil tank | 2.4 U.S. gal | |
| | Cooling liquid | 5.3 U.S. gal | |
| Hydraulic circuit for movements | Circuit type | Load sensing | |
| | Service pump | Variable displacement | |
| | Max. hydraulic flow rate | 31.7 U.S. gpm | |
| | Max. boom head flow rate | 19.8 U.S. gpm | |
| | Max. operating system pressure | 350 bar | |
| | Controls for boom movements | SIL 2 electro-proportional valve | |
| Standard met | Movements control | 1 joystick with integrated manoeuvre enable | |
| | | 2006/42/EC: EU Machinery Directive | |
| | | 2016/1628: EU Regulation on the emissions of stage V engines | |
| | | EN 1459-X: Relating to standards on the safety requirements for variable reach machines | |
| | EN 280-1/EN 280-2: standards relating to mobile elevating work platforms (if available) | | |
| | ROPS/level 2 FOPS: relating to the standards for protective structures | | |

*The data given in this brochure are provided for information purposes and are subject to change without prior notice.
All images are purely guideline and might not give an exact representation of the product.
the stated weight refers to the vehicle unladen with standard equipment and may vary depending on the chosen configuration.

The standard machine configuration includes:

CAB

- Comfort seat with adjustable headrest
- Adjustable steering column
- Analogue joypad
- Adjustable sunblind
- Heating
- Air conditioning
- FM/AM radio with USB and Bluetooth connectivity
- Ambient LED lights
- USB Type-A and Type-C (5 V) inputs

REAL TIME INFORMATION

- Touchscreen, 7"
- MCTS – Magni Combi Touch System on-board software
- Automatic RFID tools recognition system
- LMI – Load Moment Indicator
- LLD – Live Load Diagram
- Onboard and remote integrated diagnostics

TECHNICAL SPECIFICATIONS

- Q-Fit standard
- Provision for platform
- Advanced three-line CAN BUS system
- Automatic levelling system for outriggers
- Automatic front and rear wheel alignment
- Automatic parking brake
- Mechanical battery cut-off in engine compartment
- Electrical system: 24 V – IP67

SERVICE

- Warranty: 24 months/2,000 hours