



# HTH

## 20.10



MINING &  
QUARRYING



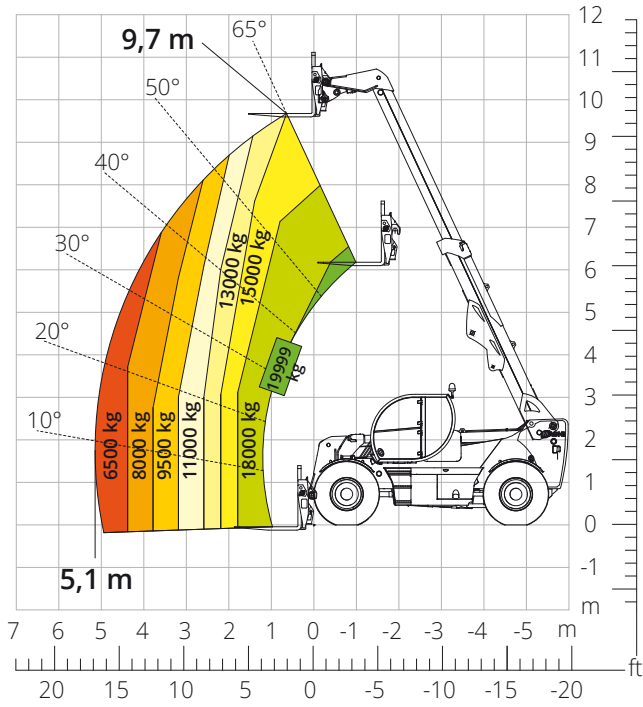
HEAVY  
LOGISTICS



DEFENCE

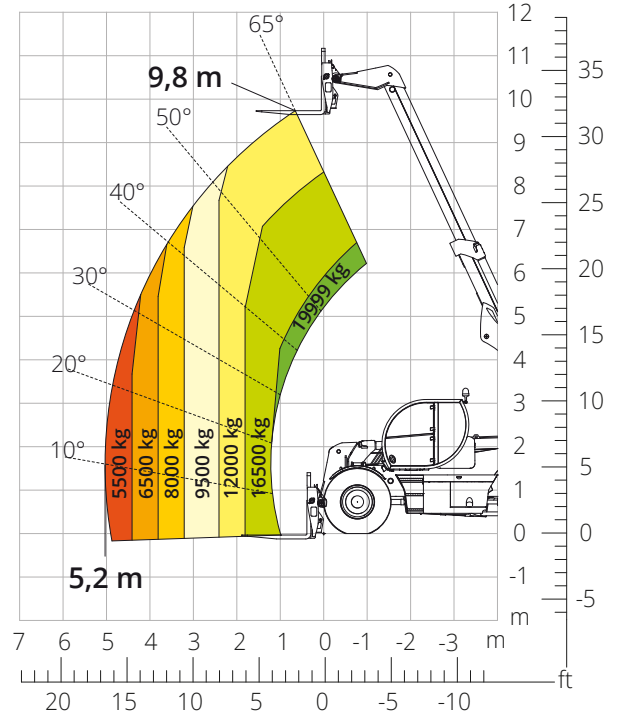
Load chart  
**FRONT ATTACHMENT ON TYRES (WORLD NOT AUS)**

ATT-03-026



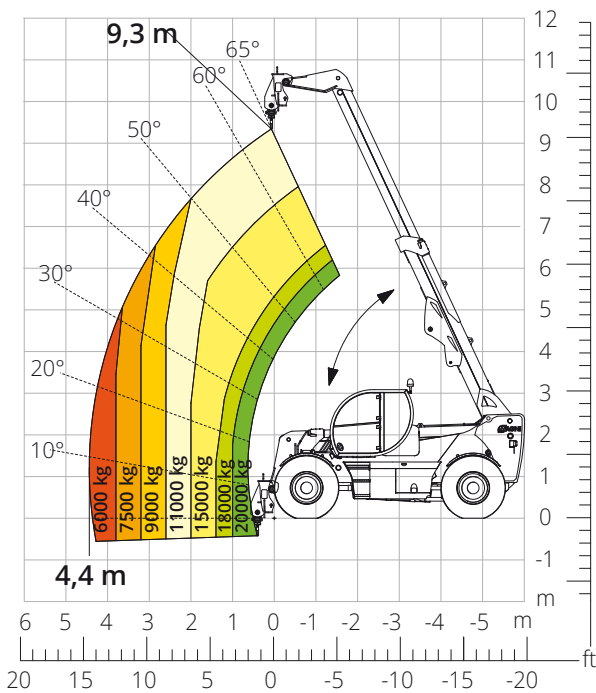
Load chart  
**FRONT ATTACHMENT ON TYRES (AUS)**

ATT-03-026



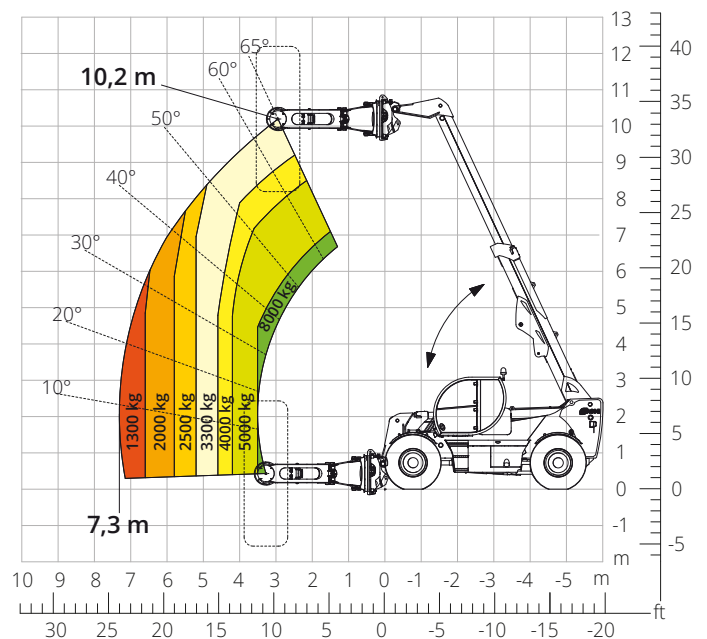
Load chart with  
**HOOK, 20,000 kg**

ATT-05-008



Load chart with  
**TYRE HANDLER, 8,000 kg**

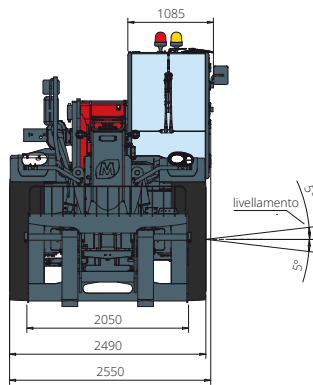
ATT-06-006



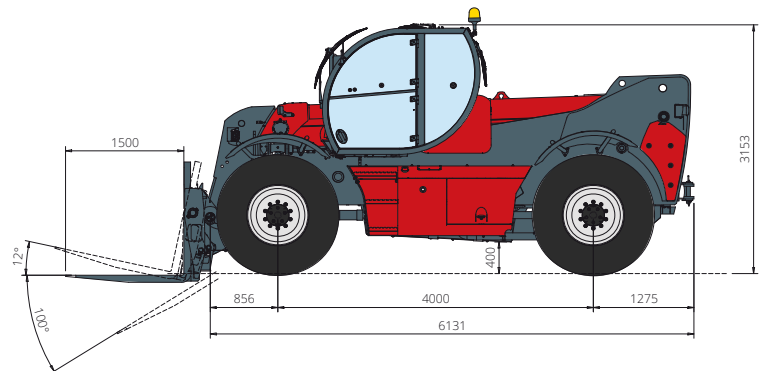
<b>Machine model</b>	Telescopic handler	HTH 20.10
	Maximum lifting capacity	19,999 kg
	Maximum lifting height	9.70 m
	Maximum reach	5.10 m
<b>Engine</b>	Model	<b>Volvo TAD582 VE-Stage V</b>   <b>Volvo TAD552 VE-Stage IIIA</b>
	Rated power	160 kW (218 hp) at 2,300 rpm
	Maximum torque	925 Nm at 1,380 rpm
	Displacement	5.13 l
	Cylinders	4 in line
	Engine type	Turbocharged direct injection common rail diesel
	Cooling system	Water - intercooler
<b>Transmission</b>	Type	Hydrostatic
	Maximum pressure	450 bar
	Gearbox	Dropbox, 2 speeds forward-reverse
<b>Axles and brakes</b>	Type	Heavy-duty with planetary gearboxes
	Front axle	Steering with levelling, +/-8°
	Rear axle	Steering and oscillating
	No. of driving - steering wheels	4WD - 4WS
	Steering mode	Frontal/Concentric/Crab
	Service brake	Servo-assisted pedal, acting on front and rear wheels
	Parking brake	Hydraulic with negative action on front and rear axles
	Tyre sizes	16,00- R 25
<b>Performance</b>	Max. travel speed	25 km/h
	Gradeability (unladen)	64%
	Turning radius	5,729 mm
<b>Weights</b>	Total unladen*	24,000 kg
<b>Tank and system capacities</b>	Diesel fuel	200 l
	AdBlue	40 l
	Hydraulic fluid	210 l
	Engine oil	16 l
	Coolant	47 l
<b>Hydraulic circuit for movements</b>	Circuit type	Load sensing
	Service pump	Variable displacement
	Max. hydraulic flow rate	165 l/min
	Max. boom head flow rate	100 l/min
	Max. working pressure	350 bar
	Distributor for boom movements	Proportional hydraulic distributor
<b>Standards met</b>	Movements control	Multifunction electro-proportional joystick
	2006/42/EC: EU Machinery Directive	
	2016/1628: EU Regulation on the emissions of stage V engines	
	EN 1459-X: Relating to standards on the safety requirements for variable reach machines	
	ROPS/level 2 FOPS: relating to the standards for protective structures	

# HTH 20.10

## DIMENSIONS (mm)

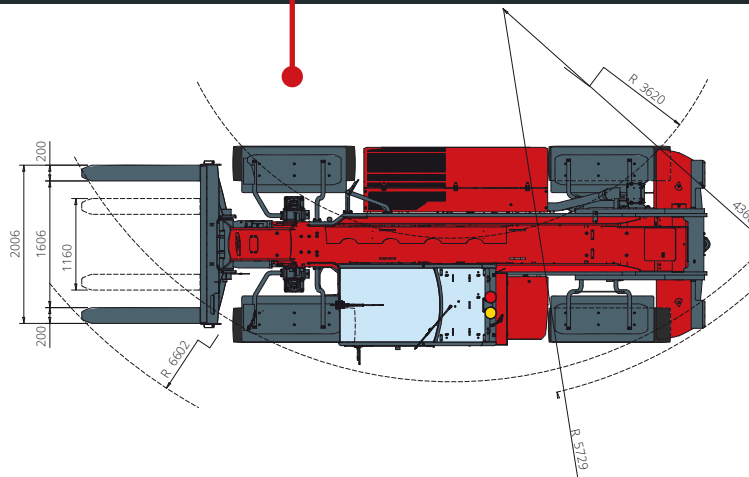


**FRONT**  
view



**SIDE**  
view

**TOP**  
view



The standard machine configuration includes:

### CAB

- Comfort seat
- Adjustable steering column
- Analogue joypad
- Heating
- Air conditioning
- FM/AM radio with USB and Bluetooth connectivity
- USB Type-A (5 V) inputs

### TECHNICAL SPECIFICATIONS

- Q-Fit Heavy-Duty
- Two-line CAN BUS system
- Automatic front and rear wheel alignment
- Automatic parking brake
- Mechanical battery cut-off in engine compartment
- Electrical system: 24 V – IP67

### REAL TIME INFORMATION

- Touchscreen, 7"
- MCTS – Magni Combi Touch System on-board software
- Automatic RFID tools recognition system
- LMI – Load Moment Indicator
- Onboard and remote integrated diagnostics

### SERVICE

- MyMagni by Trackunit connectivity system (Free of charge on request)
- Warranty: 24 months/2,000 hours